

SSL Certificates



Secure Web communication, protect e-commerce transactions and reinforce customer trust with 256-bit Secure Sockets Layer (SSL) certificates.

Secure Sockets Layer (SSL) Certificates

Online hazards, such as phishing and spoofing, continue to proliferate over the Internet, and as consumers become more aware of these risks, maintaining customer confidence takes priority. Companies must assure consumers of the validity, credibility and security of their Web sites through Secure Sockets Layer (SSL) certification and encryption. Organizations seeking to secure their online communication and transactions rely on Trustwave® SSL certificates. As the first Certificate Authority to offer 256-bit SSL certificates, Trustwave continues to lead the industry by providing the next generation in SSL security protocol along with expert technical support and validation procedures.

The New Standard in Online Security: Extended Validation (EV) SSL Certificates

Certificate authorities and Web browser software vendors worldwide have instituted the Extended Validation (EV) SSL Certificate Standard to provide for a more secure Internet. With the continued evolution of Web-based exploits, phishing scams and fraudulent activity on the Internet, EV SSL certificates enable secure connections, establish business identities and assist in preventing fraud through a rigorous validation process previously unmatched with traditional SSL certificates.

EV SSL certification includes a meticulous dual-validation process:

- **Legal** – Establishes legal existence via government records
- **Physical** – Establishes physical existence of business facilities
- **Person** – Validates that the person applying for the certificate is authorized by their company to do so
- **Domain Name** – Standard validation of legitimate domain registration
- **Operational** – Establishes operational existence via validation that the organization has been incorporated for three years or is listed in various business information databases

The validation requirements for an EV SSL certificate are indeed thorough and complex in order to bolster credibility, however, Trustwave's expertise allows us to streamline the application process and reduce wait time.

About Trustwave

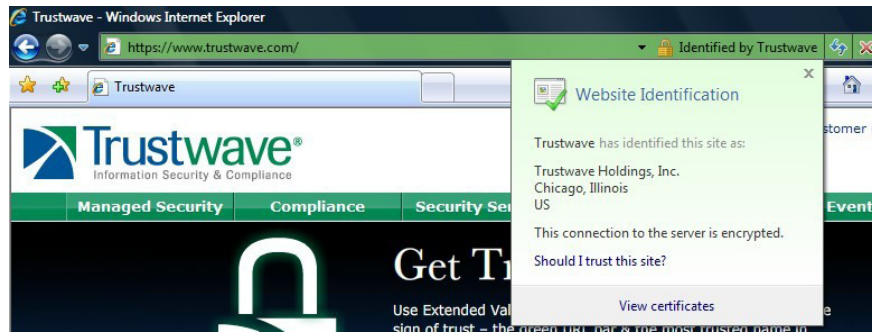
Trustwave is a leading, global provider of information security and compliance management solutions to large and small businesses and the public sector. Trustwave offers and supports SSL certificates, proprietary security appliances, managed security services and compliance management solutions to help organizations simplify, accelerate and validate their compliance with industry standards and regulations such as PCI DSS, HIPAA, SAS-70, GLBA and ISO 27002 (formerly 17799) among others. Trustwave's clients include financial institutions, large and small retailers, global electronic exchanges, educational institutions, business service firms and government agencies. Trustwave is headquartered in Chicago with offices throughout North America, South America, Europe, the Middle East, Africa, Asia and Australia.

www.trustwave.com 1-888-878-7817



The Green Bar: Greater Security Visibility with EV SSL Certificates

To reinforce trust in your organization, a customer's browser address bar turns green when a valid EV SSL certificate is presented and a secure connection is established. Among others, Mozilla, Microsoft, Opera, KDE and Apple browsers all support EV SSL certificates. For example, in Internet Explorer customers can easily distinguish between valid EV SSL certificates (green address bar), suspicious certificates (yellow address bar) and certificates that are fraudulent or not trusted (red address bar).



Numerous Certificate Offerings to Fit Any Organization's Needs

As a part of the Trusted Commerce program that includes PCI DSS compliance services and other e-commerce security services, Trustwave will tailor an SSL solution to fulfill your needs.

Extended Validation (EV) SSL Certificates

The EV SSL certificate provides corporations and government agencies with the most trusted and stringently-validated certificate available today.

Premium SSL Certificates

The premium SSL certificate consists of a full-featured, dual-validated Class-3 certificate for use on standard business Web sites, mail servers, and intranets. Trustwave's premium SSL certificate provides you and your customers the highest level of confidence in e-commerce transactions.

Wildcard SSL Certificates

The wildcard SSL certificate allows organizations to secure unlimited sub-domains and uses the highest-level of encryption allowable to secure Web e-mail, intranets, customer portals and control panels.

Digital E-mail Identification Certificates

Trustwave's S/MIME e-mail digital identification certificates secure your e-mail communications by encrypting message content and attachments. In addition, these digital IDs verify an e-mail message's sender to combat phishing scams and e-mail spoofing.

Trusted CommerceSM Web Site Security

Trustwave's Trusted Commerce program protects a merchant against data security breaches and fraud. The Trusted Commerce program includes Payment Card Industry Data Security Standard (PCI DSS) compliance services, SSL certificates and the Trusted Commerce Web site security seal.

The Trusted Commerce seal denotes credibility. A Web site that displays the Trusted Commerce seal handles sensitive information in a secure, responsible manner. When an organization uses Trustwave SSL, PCI DSS compliance services and promotes that fact with a Trusted Commerce Web site seal, a shopper can rest assured that payment card information and other sensitive data provided to the organization's Web site will not fall into the hands of malicious individuals seeking to profit from stolen consumer data.

While ideal, layered protection includes both PCI DSS compliance services and SSL certificates from Trustwave, users of either solution can display the Trusted Commerce seal on their Web site. Millions of consumers view the Trusted Commerce seal daily on merchant Web sites across numerous industries.



Traditional, Industry-Standard SSL Competitively Priced

Trustwave provides Class-3 SSL certificates for Web servers, mail servers, e-commerce, and e-mail applications. In addition, Trustwave prices SSL certificates to provide the most cost-effective solution on the market.

Every Trustwave SSL certificate includes:

- 256-Bit Digital Encryption
- Class-3 SSL certificate
- Priority technical support
- 128-bit and 40-bit backward compatibility
- Trusted CommerceSM security seal
- 100% Trusted Root Guarantee
- Re-issues for the life of the certificate

The following Web browsers support Trustwave SSL certificates:

- Internet Explorer 5.00.2919.6307 and above
- Netscape 4.61 and above
- AOL 5 and above
- Opera 6.1 and above
- Mozilla 0.9.8 and above
- All versions of Safari
- Firefox 0.7 and above (includes similar Linux clones, like Epiphany, Galeon, and Konqueror)

Depending on the type and validation process of the SSL certificate you select, Trustwave can issue your certificate in minutes.



For web sites with dark backgrounds



For web sites with light backgrounds